

UNION WAY

UNION WAY

WEST END RETAIL

1022 W BURNSIDE
IN PORTLAND, OREGON



ADDRESS

1022 W Burnside Street in Portland, Oregon

AVAILABLE SPACE

- 589 RSF
- 1,135 RSF – Retail
- 1,295 RSF – Second Generation Restaurant
- 2,128 RSF

RENTAL RATE

Please call for details

TRAFFIC COUNTS

W Burnside – 22,019 ADT ('22)

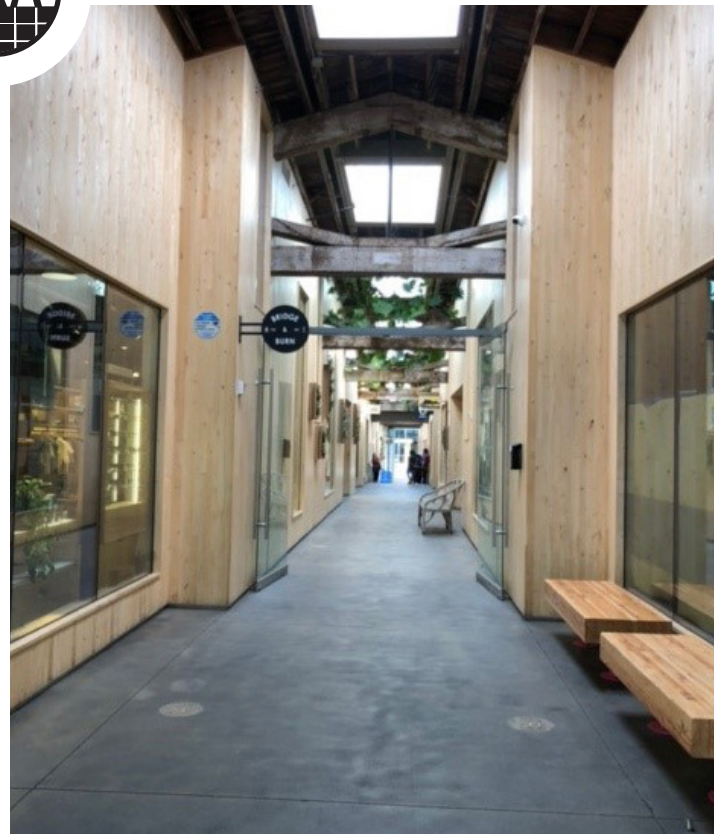
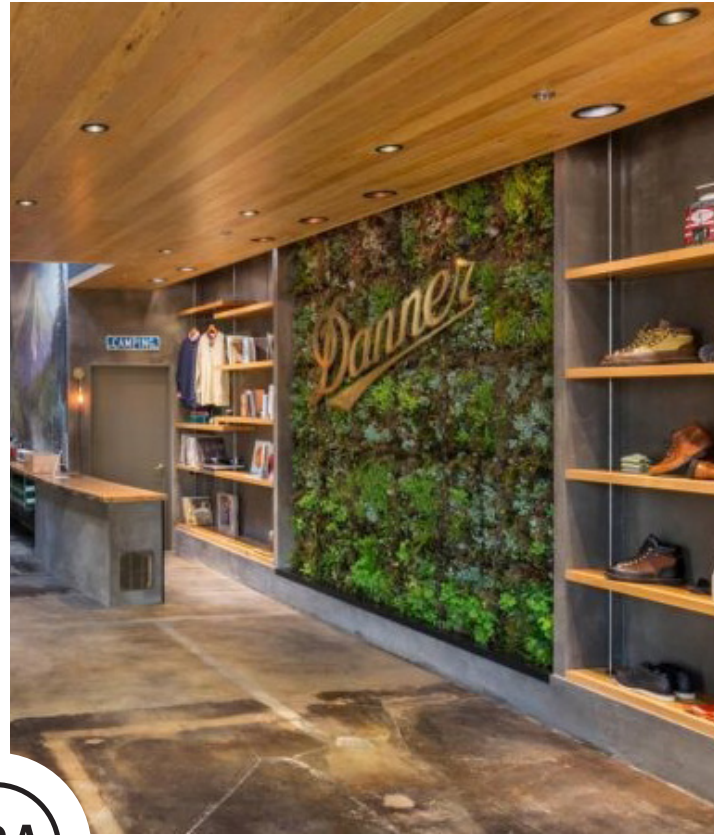


HIGHLIGHTS

- Union Way is a modern indoor retail, food and beverage experience in Portland's notable West End District which opened in 2013.
- Clean Scandinavian architecture features high end finishes, large storefronts, and skylights.
- Co-tenants include Danner Boots, Wailua Shave Ice, Best Coast Barber & Co, Self Edge and Sweet 20 Tea & Desserts.
- Nearby retailers include Powell's City of Books, Dr. Martens, Patagonia, Living Room Theaters and coming soon – **Shake Shack!**
- A-frame board signage opportunity at both ends of alley and interior blade signage.
- Expansive common area including seating, restrooms, and trash.
- Great opportunity for tenants looking for turn-key retail and commercial micro space in a secure, central location.

EXTERIOR SIGNAGE
AND ALLEY STOREFRONTS

UNION WAY
1022 W BURNSIDE
PORTLAND, OR



UNION WAY 1022 W BURNSIDE PORTLAND, OR

THE BREWERY BLOCKS

frame CENTRAL
louisa
lululemon
west elm
WHOLE FOODS MARKET
CALIFORNIA CLOSETS

SITE

COMING SOON
Self Edge

10W
Redevelopment
mixed use of
office/retail
COMING SOON



The Brewery Blocks



SITE PLAN



FUTURE REDEVELOPMENT



SW HARVEY MILK STREET

AVAILABLE
2,128 RSF

AVAILABLE
1,135 RSF



PROJECT & TENANT SIGN

AVAILABLE
1,295 RSF

AVAILABLE
589 RSF



PROJECT & TENANT SIGN



SW OAK STREET

W BURNSIDE STREET
22.019 ADT (2022)

W BURNSIDE STREET



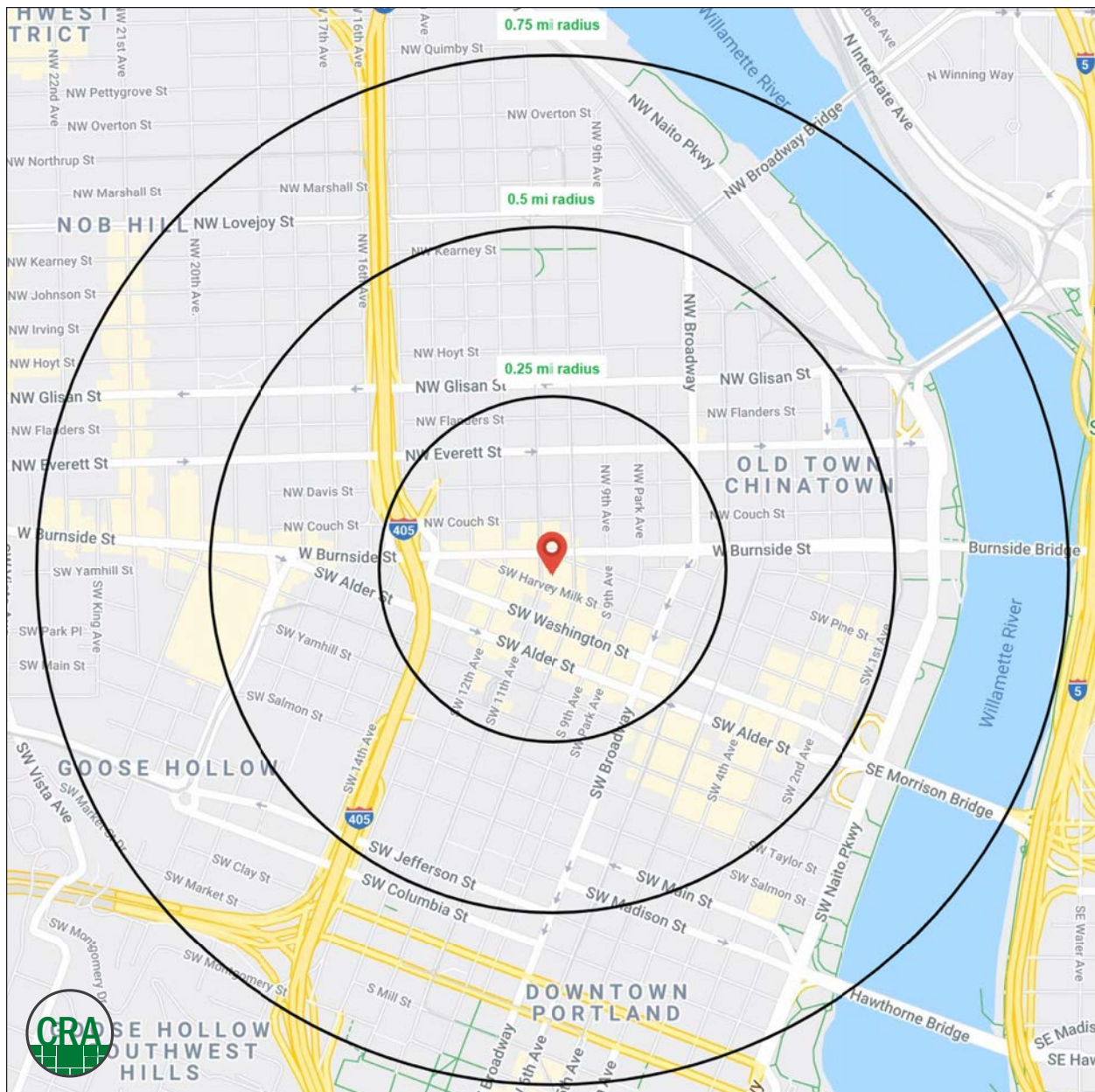
UNION WAY 1022 W BURNSIDE PORTLAND, OR

DEMOGRAPHIC SUMMARY

Source: Regis - SitesUSA (2022)	.25 MILE	.5 MILE	.75 MILE
Estimated Population 2022	3,018	14,121	31,019
Estimated Households	2,072	9,628	20,864
Average HH Income	\$79,440	\$80,413	\$83,563
Median Home Value	\$544,295	\$549,197	\$570,272
Daytime Demographics 16+	17,813	59,820	99,465
Some College or Higher	82.4%	80.1%	82.3%

\$549,197

Median Home Value
½ MILE RADIUS



Summary Profile

2010-2020 Census, 2022 Estimates with 2027 Projections
 Calculated using Weighted Block Centroid from Block Groups



Lat/Lon: 45.5227/-122.6817

Union Way Portland, OR 97209	0.25 mi radius	0.5 mi radius	0.75 mi radius
Population			
2022 Estimated Population	3,018	14,121	31,019
2027 Projected Population	3,038	14,119	30,767
2020 Census Population	3,175	14,341	31,470
2010 Census Population	3,042	12,677	26,596
Projected Annual Growth 2022 to 2027	0.1%	-	-0.2%
Historical Annual Growth 2010 to 2022	-	0.9%	1.4%
2022 Median Age	42.2	41.6	39.2
Households			
2022 Estimated Households	2,072	9,628	20,864
2027 Projected Households	2,116	9,768	20,967
2020 Census Households	2,177	9,784	21,172
2010 Census Households	1,777	7,989	16,920
Projected Annual Growth 2022 to 2027	0.4%	0.3%	-
Historical Annual Growth 2010 to 2022	1.4%	1.7%	1.9%
Race and Ethnicity			
2022 Estimated White	70.5%	70.3%	71.1%
2022 Estimated Black or African American	6.4%	6.2%	5.5%
2022 Estimated Asian or Pacific Islander	7.5%	7.4%	9.1%
2022 Estimated American Indian or Native Alaskan	1.2%	1.4%	1.2%
2022 Estimated Other Races	14.3%	14.6%	13.0%
2022 Estimated Hispanic	17.5%	17.9%	15.2%
Income			
2022 Estimated Average Household Income	\$79,440	\$80,413	\$83,563
2022 Estimated Median Household Income	\$68,170	\$55,862	\$57,760
2022 Estimated Per Capita Income	\$56,574	\$56,723	\$57,590
Education (Age 25+)			
2022 Estimated Elementary (Grade Level 0 to 8)	2.0%	2.4%	2.3%
2022 Estimated Some High School (Grade Level 9 to 11)	3.1%	4.4%	3.2%
2022 Estimated High School Graduate	12.5%	13.2%	12.3%
2022 Estimated Some College	19.0%	18.4%	17.4%
2022 Estimated Associates Degree Only	4.3%	5.2%	5.7%
2022 Estimated Bachelors Degree Only	31.1%	30.1%	32.3%
2022 Estimated Graduate Degree	28.0%	26.4%	26.9%
Business			
2022 Estimated Total Businesses	1,552	4,692	7,337
2022 Estimated Total Employees	16,551	54,085	87,827
2022 Estimated Employee Population per Business	10.7	11.5	12.0
2022 Estimated Residential Population per Business	1.9	3.0	4.2

For more information, please contact:

ASHLEY HEICHELBECH 503.490.7212 | ashley@cra-nw.com

KATHLEEN HEALY 503.880.3033 | kathleen@cra-nw.com



KNOWLEDGE

RELATIONSHIPS

EXPERIENCE



**COMMERCIAL
REALTY ADVISORS
NORTHWEST LLC**

Licensed brokers in Oregon & Washington

 15350 SW Sequoia Parkway, Suite 198 • Portland, Oregon 97224



www.cra-nw.com



503.274.0211

The information herein has been obtained from sources we deem reliable. We do not, however, guarantee its accuracy. All information should be verified prior to purchase/leasing. View the Real Estate Agency Pamphlet by visiting our website, www.cra-nw.com/home/agency-disclosure.html. CRA PRINTS WITH 30% POST-CONSUMER, RECYCLED-CONTENT MATERIAL.